

CUSTOMER DATA

AIR VOLUME
 FILTER AREA
 AIR/CLOTH RATIO
 PRODUCT
 TEMPERATURE
 DUST LOADING

CONSTRUCTION

MS (STANDARD)
 SS (DUST CONTACT)
 SS (GAS CONTACT)
 OTHER

FILTER BAGS

STANDARD 16 OZ. PE
 OTHER

DISCHARGE FLANGE

STANDARD 8"φ
 OTHER

OPTIONS & ORIENTATIONS

- INLET
- INLET BAFFLE
- TARGET PLATE
- DUTILET
- BIRDSCREEN
- CAP. ACCESS
- D.A.P. ACCESS
- HOPPER PORT
- SUPPORT SADDLE
- SUPPORT STRUCT.
- PLATFORM
- LADDER
- FAN
- SLIDE GATE
- DRUM COVER KIT
- VIBRATOR
- ROTARY VALVE
- LEVEL INDICATOR
- POKE HOLE
- INTERIOR PAINT
- SUPPORT GRID
- EXPLOSION DDDR
- SCREW CONVEYOR
- INSULATION
- SPRINKLER
- SOLENOID BOX
- PULSE ON DEMAND
- PRESSURE SWITCH
- OTHER

NO. OF BAGS	BAG LGH (IN)	FILTER AREA (SQ. FT.)	NO. OF VALVES	100 PSI COMP. AIR (SCFH)	EST. WEIGHT (LBS.)	INLET SIZE (IN)	OUTLET SIZE (IN)	GENERAL DIMENSIONS				
								A	B	C	D	E
CB 7	36	30	3	3.1	315	3"φ	4"φ	2'-0"	1'-6"	3'-10"	1'-2"	6'-6"
CB 7	58	51	3	3.3	385	THRU	THRU	2'-0"	1'-6"	5'-8"	1'-2"	8'-4"
CB 8	84	74	3	3.5	425	6"φ	7"φ	2'-0"	1'-6"	7'-10"	1'-2"	10'-6"
CB 10	36	43	4	4.5	410	4"φ	5"φ	2'-8"	1'-8"	3'-10"	1'-9"	7'-3"
CB 10	58	72	4	4.7	500	THRU	THRU	2'-8"	1'-8"	5'-8"	1'-9"	9'-1"
CB 10	84	106	4	5.1	560	7"φ	8"φ	2'-8"	1'-8"	7'-10"	1'-9"	11'-3"
CB 14	58	101	4	4.8	690	5"φ	6"φ	3'-0"	1'-8"	5'-8"	2'-0"	9'-4"
CB 14	84	148	4	5.2	780	THRU	THRU	3'-0"	1'-8"	7'-10"	2'-0"	11'-6"
CB 18	100	178	4	5.4	953	8"φ	9"φ	3'-0"	1'-8"	9'-2"	2'-0"	12'-10"
CB 18	58	131	4	6.0	880	6"φ	7"φ	3'-4"	1'-10"	5'-8"	2'-4"	12'-0"
CB 18	84	191	4	6.5	1000	THRU	THRU	3'-4"	1'-10"	7'-10"	2'-4"	12'-0"
CB 24	100	229	5	6.8	1080	9"φ	10"φ	3'-4"	1'-10"	9'-2"	2'-4"	13'-4"
CB 24	58	173	5	6.5	1310	7"φ	8"φ	4'-0"	1'-10"	5'-8"	2'-11"	10'-5"
CB 24	84	254	5	6.9	1450	THRU	THRU	4'-0"	1'-10"	7'-10"	2'-11"	12'-7"
CB 24	100	305	5	7.2	1590	10"φ	11"φ	4'-0"	1'-10"	9'-2"	2'-11"	13'-11"

SHOP NOTES

- 1) DESIGN PRESSURE UP TO +/- 20" V.G.
- 2) SHOP PAINT. ALL EXTERIOR MS SURFACES ONE COAT OF DIRECT-TO-METAL ENAMEL, SERIES 55, COLOR (SMB55W101SHG) ULTRA GRAY @ 1-1 1/2 MILS D.F.T.,
- 3) AIR HEADER IS ALWAYS LOCATED AT 0 DEGREES.
- 4) CLEAN AIR OUTLET CANNOT BE AT 0 DEGREES.
- 5) A NEMA 4 TIMER AND SOLENOID BOX ASSEMBLY IS SUPPLIED. THE SOLENOID VALVES ARE PREWIRED TO THEIR RESPECTIVE TIMER OUTPUT TERMINALS. THE SOLENOID PORT IS PRE-CONNECTED TO ITS RESPECTIVE DIAPHRAGM VALVE RELIEF PORT USING POLY-FLOW TUBING.
- 6) ALL UNITS WITH 58" & 84" FILTER BAGS WILL HAVE 20" X 36" HINGED ACCESS DDDRS. ALL UNITS WITH 100" FILTER BAGS WILL HAVE 20" X 44" HINGED ACCESS DDDRS. CB-7-58 & CB-7-84 UNITS WILL HAVE A 16" X 24" HINGED ACCESS DDDR. CB-7-58 & CB-7-84 UNITS WILL HAVE A 16" X 36" BOLTED ACCESS DDDR.
- 7) GENERAL ARRANGEMENT IS TO BE USED FOR REFERENCE ONLY AND NOT FOR CONSTRUCTION UNLESS CERTIFIED BY CUSTOMER.

REV.	DESCRIPTION	DATE BY

UNLESS OTHERWISE SPECIFIED, ALL DIMENSIONS ARE IN FEET & INCHES.

TOLERANCES
 FRACTIONAL ± 1/8"
 ANGULAR ± .5°

THIS MATERIAL IS THE SOLE PROPERTY OF ULTRA INDUSTRIES INC. AND SHALL NOT BE REPRODUCED, PUBLISHED OR DISCLOSED TO ANYONE WITHOUT OBTAINING THE WRITTEN AUTHORIZATION OF ULTRA INDUSTRIES INC.

NO BACKCHARGES FOR FIELD RELATED WORK OF ANY KIND WILL BE ACCEPTED UNLESS FIRST REQUESTED AND AGREED TO WITH WRITTEN AUTHORIZATION FROM ULTRA INDUSTRIES INC.



ULTRA INDUSTRIES, INC.
 1908 DEKOVEN AVE. RACINE, WISCONSIN 53403
 PHONE: 414/533-5070 FAX: 414/533-5102

FOR SPARE PARTS, CALL: 1-800-35ULTRA

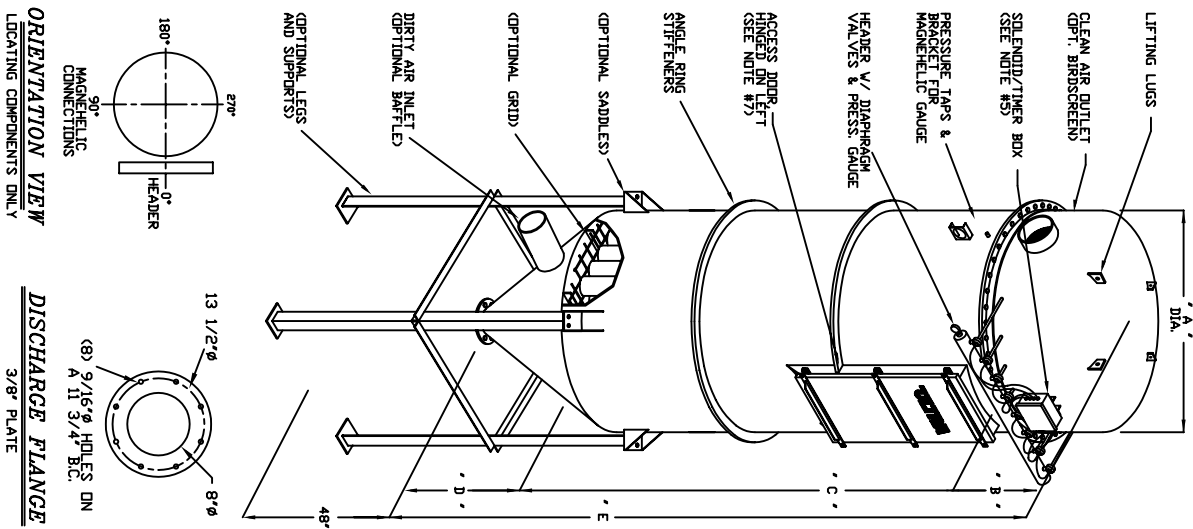
SCALE: N.T.S.	SERIAL NO. ARRANGEMENT III	DRAWN BY: MLD
DATE: 3-00		APPROVED BY:

GENERAL ARRANGEMENT

MODEL: CB-7 -- CB-24 COLLECTORS	DRAWING NUMBER: CB7-24 III	REV.: 0
BOTTOM BAG REMOVAL		

ORIENTATION VIEW
 LOCATING COMPONENTS ONLY

DISCHARGE FLANGE
 3/8" PLATE



- CUSTOMER DATA**
- AIR VOLUME
 - FILTER AREA
 - AIR/CLOTH RATIO
 - PRODUCT
 - TEMPERATURE
 - DUST LOADING
- CONSTRUCTION**
- MS (STANDARD)
 - SS (DUST CONTACT)
 - SS (GAS CONTACT)
 - OTHER
- FILTER BAGS**
- STANDARD 16 OZ. PE
 - OTHER
- DISCHARGE FLANGE**
- STANDARD 8"φ
 - OTHER
- OPTIONS & ORIENTATIONS**
- INLET
 - INLET Baffle
 - TARGET PLATE
 - OUTLET
 - BIRDSCREEN
 - CAP ACCESS
 - DAP ACCESS
 - HOPPER PORT
 - SUPPORT SADDLE
 - SUPPORT STRUCT.
 - PLATFORM
 - LADDER
 - FAN
 - SLIDE GATE
 - DRUM COVER KIT
 - VIBRATOR
 - ROTARY VALVE
 - LEVEL INDICATOR
 - POKE HOLE
 - INTERIOR PAINT
 - SUPPORT GRID
 - EXPLOSION DOOR
 - SCREW CONVEYOR
 - INSULATION
 - SPRINKLER
 - SOLENOID BOX
 - PULSE ON DEMAND
 - PRESSURE SWITCH
 - OTHER

NO. OF BAGS	BAG LGH (IN)	FILTER AREA (SQ. FT.)	NO. OF VALVES	100 PSI COMP. AIR (SCFM)	EST. WEIGHT (LBS)	INLET SIZE (IN)	OUTLET SIZE (IN)	GENERAL DIMENSIONS				
								A	B	C	D	E
CB 34	58	245	6	7.0	1650	8"φ	9"φ	4'-8"	2'-0"	5'-8"	3'-6"	11'-2"
CB 39	84	360	6	7.7	1800	THRU	THRU	4'-8"	2'-0"	7'-10"	3'-6"	13'-4"
CB 48	100	432	7	8.0	1940	11"φ	12"φ	4'-8"	2'-0"	9'-2"	3'-6"	14'-8"
CB 58	58	281	7	7.5	1790	9"φ	10"φ	5'-0"	2'-0"	5'-8"	3'-9"	11'-5"
CB 65	84	414	7	8.0	1940	THRU	THRU	5'-0"	2'-0"	7'-10"	3'-9"	13'-7"
CB 65	100	495	8	8.5	2130	12"φ	13"φ	5'-0"	2'-0"	9'-2"	3'-9"	14'-11"
CB 65	58	346	8	10.3	2070	10"φ	11"φ	5'-6"	2'-2"	5'-8"	4'-3"	14'-3"
CB 65	84	509	8	10.7	2220	THRU	THRU	5'-6"	2'-2"	7'-10"	4'-3"	14'-3"
CB 65	100	609	8	11.1	2510	13"φ	14"φ	5'-6"	2'-2"	9'-2"	4'-3"	15'-7"
CB 65	58	418	8	10.6	2270	11"φ	12"φ	6'-0"	2'-4"	5'-8"	4'-8"	12'-8"
CB 65	84	615	8	11.2	2440	THRU	THRU	6'-0"	2'-4"	7'-10"	4'-8"	14'-10"
CB 65	100	736	8	11.8	2610	14"φ	15"φ	6'-0"	2'-4"	9'-2"	4'-8"	16'-2"
CB 65	58	468	9	11.3	2770	12"φ	13"φ	6'-6"	2'-4"	5'-8"	5'-1"	13'-1"
CB 65	84	689	9	11.7	2950	THRU	THRU	6'-6"	2'-4"	7'-10"	5'-1"	15'-3"
CB 65	100	825	9	12.1	3130	15"φ	16"φ	6'-6"	2'-4"	9'-2"	5'-1"	16'-7"

SHOP NOTES

- DESIGN PRESSURE UP TO +/- 20" W.G.
- SHOP PAINT: ALL EXTERIOR MS SURFACES ONE COAT OF DIRECT-TO-METAL ENAMEL, SERIES 55, COLOR (SWB55W101SHG) ULTRA GRAY @ 1-1/2 MILS DFT.,
- AIR HEADER IS ALWAYS LOCATED AT 0 DEGREES.
- CLEAN AIR OUTLET CANNOT BE AT 0 DEGREES.
- A NEMA 4 SOLENOID/TIMER BOX ASSEMBLY IS SUPPLIED. THE SOLENOID VALVES ARE PREWIRED TO THEIR RESPECTIVE TIMER OUTPUT TERMINALS. THE SOLENOID PORT IS PRE-CONNECTED TO ITS RESPECTIVE DIAPHRAGM VALVE RELIEF PORT USING POLY-FLOW TUBING.
- ALL UNITS WITH 58" & 84" FILTER BAGS WILL HAVE 20" X 36" HINGED ACCESS DOORS. ALL UNITS WITH 100" FILTER BAGS WILL HAVE 20" X 44" HINGED ACCESS DOORS.
- GENERAL ARRANGEMENT IS TO BE USED FOR REFERENCE ONLY AND NOT FOR CONSTRUCTION UNLESS CERTIFIED BY CUSTOMER.

REV.	DESCRIPTION	DATE BY

UNITS: _____ TOLERANCES: _____

UNLESS OTHERWISE SPECIFIED, ALL DIMENSIONS ARE IN FEET & INCHES. FRACTIONAL ± 1/8" ANGULAR ± 5°

THIS MATERIAL IS THE SOLE PROPERTY OF ULTRA INDUSTRIES INC. AND SHALL NOT BE REPRODUCED, PUBLISHED OR DISCLOSED TO ANYONE WITHOUT OBTAINING THE WRITTEN AUTHORIZATION OF ULTRA INDUSTRIES INC.

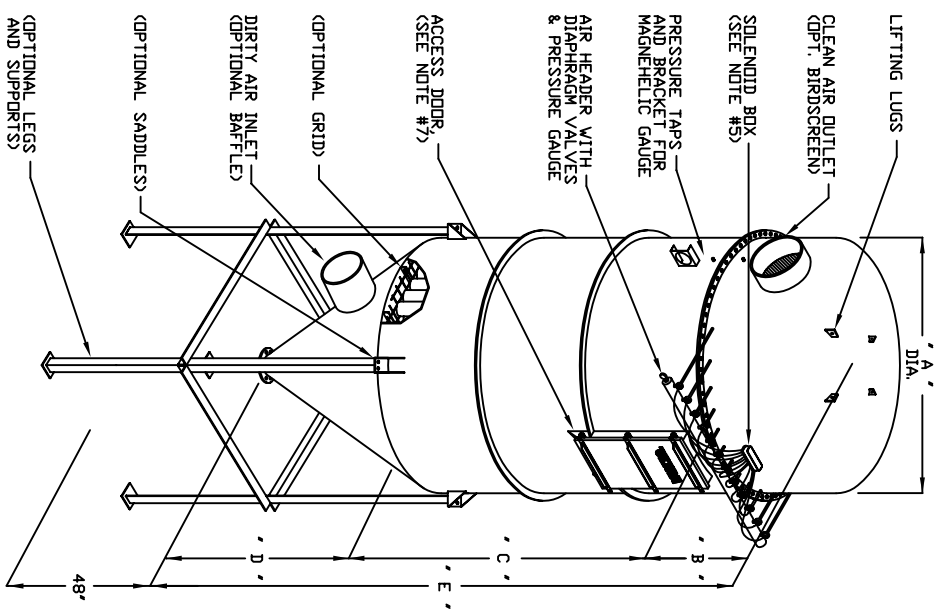
NO BACKCHARGES FOR FIELD RELATED WORK OF ANY KIND WILL BE ACCEPTED UNLESS FIRST REQUESTED AND AGREED TO WITH WRITTEN AUTHORIZATION FROM ULTRA INDUSTRIES INC.

ULTRA
 FOR SPARE PARTS, CALL: 1-800-35ULTRA
 1908 DEKOVEN AVE. RACINE, WISCONSIN 53403
 PHONE: 414/633-5070 FAX: 414/633-5102

SCALE: N.T.S. SERIAL NO.: _____ DRAWN BY: MLD
 DATE: 1-99 ARRANGEMENT III APPROVED BY: _____

GENERAL ARRANGEMENT

MODEL: CB-34 -- CB-65 COLLECTORS DRAWING NUMBER: CB34-65 III REV.: 0
 BOTTOM BAG REMOVAL



CUSTOMER DATA

AIR VOLUME
 FILTER AREA
 AIR/CLOTH RATIO
 PRODUCT TEMPERATURE
 DUST LOADING

CONSTRUCTION

MS (STANDARD)
 SS (DUST CONTACT)
 SS (GAS CONTACT)
 OTHER

FILTER BAGS

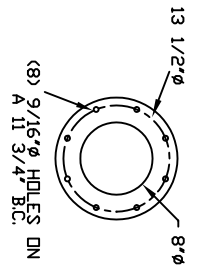
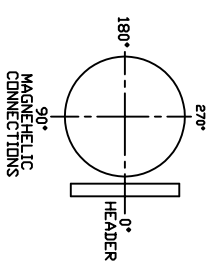
STANDARD 16 OZ. PE
 OTHER

DISCHARGE FLANGE

STANDARD 8"φ
 OTHER

OPTIONS & ORIENTATIONS

- INLET
- INLET Baffle
- TARGET PLATE
- OUTLET
- BIRDSCREEN
- CAP. ACCESS
- DIAP. ACCESS
- HOPPER PORT
- SUPPORT SADDLE
- SUPPORT STRUCT.
- PLATFORM
- LADDER
- FAN
- SLIDE GATE
- DRUM COVER KIT
- VIBRATOR
- ROTARY VALVE
- LEVEL INDICATOR
- POKE HOLE
- INTERIOR PAINT
- SUPPORT GRID
- EXPLOSION DOOR
- SCREW CONVEYOR
- INSULATION
- SPRINKLER
- SOLENOID BOX
- PULSE ON DEMAND
- PRESSURE SWITCH
- OTHER



ORIENTATION VIEW
 LOCATING COMPONENTS ONLY

DISCHARGE FLANGE
 3/8" PLATE

NO. OF BAGS	BAG LIGH (SQ. FT.)	FILTER AREA (SQ. FT.)	ND OF VALVES	100 PSI DROP AIR WEIGHT (LBS.)	INLET SIZE (IN)	OUTLET SIZE (IN)	GENERAL DIMENSIONS				
							A	B	C	D	E
CB 84	848	130	10	3960	13"φ	14"φ	7'-0"	2'-6"	7'-10"	5'-6"	15'-10"
CB 100	1016	140	10	4300	14"φ	14"φ	7'-0"	2'-6"	9'-2"	5'-6"	17'-2"
CB 120	1225	152	10	4700	16"φ	17"φ	7'-0"	2'-6"	10'-10"	5'-6"	18'-10"
CB 84	1081	135	11	4430	14"φ	15"φ	8'-0"	2'-8"	7'-10"	6'-5"	16'-11"
CB 100	1295	145	11	4770	14"φ	15"φ	8'-0"	2'-8"	9'-2"	6'-5"	18'-3"
CB 102	1562	157	11	5195	17"φ	18"φ	8'-0"	2'-8"	10'-10"	6'-5"	19'-11"
CB 84	1315	140	12	4500	15"φ	16"φ	8'-6"	2'-8"	7'-10"	6'-10"	17'-4"
CB 100	1574	150	12	4900	16"φ	17"φ	8'-6"	2'-8"	9'-2"	6'-10"	18'-8"
CB 124	1899	162	12	5400	18"φ	19"φ	8'-6"	2'-8"	10'-10"	6'-10"	20'-4"
CB 84	1410	160	12	5150	16"φ	17"φ	9'-0"	2'-8"	7'-10"	7'-3"	17'-9"
CB 100	1689	170	12	5560	17"φ	18"φ	9'-0"	2'-8"	8'-10"	7'-3"	19'-1"
CB 133	2037	182	12	7073	19"φ	20"φ	9'-0"	2'-8"	10'-10"	7'-3"	20'-9"
CB 84	1739	186	14	7800	17"φ	18"φ	10'-0"	2'-10"	7'-10"	8'-1"	18'-9"
CB 100	2082	198	14	8220	18"φ	19"φ	10'-0"	2'-10"	9'-2"	8'-1"	20'-1"
CB 164	2512	210	14	8745	20"φ	21"φ	10'-0"	2'-10"	10'-10"	8'-1"	21'-9"

SHOP NOTES

- 1) DESIGN PRESSURE UP TO +/- 20" V.G.
- 2) SHOP PAINT: ALL EXTERIOR MS SURFACES ONE COAT OF DIRECT-TO-METAL ENAMEL, SERIES 55, COLOR (SMB55M101SHIG) ULTRA GRAY @ 1-1 1/2 MILS D.F.T.,
- 3) AIR HEADER IS ALWAYS LOCATED AT 0 DEGREES.
- 4) CLEAN AIR OUTLET CANNOT BE AT 0 DEGREES.
- 5) CB-80 UNITS WILL HAVE A NEMA 4 SOLENOID/TIMER BOX ASSEMBLY.
- 6) CB-102 - CB-164 UNITS WILL HAVE A NEMA 4 SOLENOID BOX. THE SOLENOID VALVES ARE PREWIRED TO THEIR RESPECTIVE DUTY TERMINALS. THE SOLENOID PORT IS PRE-CONNECTED TO ITS RESPECTIVE DIAPHRAGM VALVE RELIEF PORT USING POLY-FLOW TUBING.
- 7) A TIMER & NEMA 4 TIMER BOX IS SUPPLIED AND SHIPPED LOOSE FOR FIELD LOCATING AND MTG. THE TIMER BOX REQUIRES 1 PH / 60 HZ / 115 VOLT ELECTRICAL CONNECTION. (CB-102 - CB-164 UNITS ONLY).
- 7) ALL UNITS WILL HAVE A 20" X 44" HINGED ACCESS DOOR.
- 8) GENERAL ARRANGEMENT IS TO BE USED FOR REFERENCE ONLY AND NOT FOR CONSTRUCTION UNLESS CERTIFIED BY CUSTOMER.

REV.	DESCRIPTION	DATE BY

UNLESS OTHERWISE SPECIFIED, ALL DIMENSIONS ARE IN FEET & INCHES.

TOLERANCES
 FRACTIONAL ± 1/8"
 ANGULAR ± 5°

THIS MATERIAL IS THE SOLE PROPERTY OF ULTRA INDUSTRIES INC. AND SHALL NOT BE REPRODUCED, PUBLISHED OR DISCLOSED TO ANYONE WITHOUT OBTAINING THE WRITTEN AUTHORIZATION OF ULTRA INDUSTRIES INC.

NO BACKCHARGES FOR FIELD RELATED WORK OF ANY KIND WILL BE ACCEPTED UNLESS FIRST REQUESTED AND AGREED TO WITH WRITTEN AUTHORIZATION FROM ULTRA INDUSTRIES INC.



ULTRA INDUSTRIES, INC.
 1908 DEKOVEN AVE. RACINE, WISCONSIN 53403
 PHONE: 414/633-5070 FAX: 414/633-5102

FOR SPARE PARTS, CALL: 1-800-35ULTRA

SCALE:	DATE:	ARRANGEMENT III	DRAWN BY:	APPROVED BY:
N.T.S.	1-99	ARRANGEMENT III	MLD	MLD

MODEL	DRAWING NUMBER	REV.
CB-80 --- CB-164 COLLECTORS	CB80-164 III	0

GENERAL ARRANGEMENT

BOTTOM BAG REMOVAL