

**EXAMPLE**

- MODEL UHC-43 (SHOWN) IS 4 CARTRIDGES ACROSS X 3 CARTRIDGES HIGH
- FILTER AREA IS DEPENDANT ON THE CARTRIDGE TYPE SELECTED
- INLET AND OUTLET SIZES ARE DEPENDANT ON AIR FLOWS

| MODEL  | NO. OF CARTRIDGES | FILTER AREA * (SQ. FT.) | WEIGHT (LBS.) | GENERAL DIMENSIONS |       |       |    |    |        |
|--------|-------------------|-------------------------|---------------|--------------------|-------|-------|----|----|--------|
|        |                   |                         |               | A                  | B     | C     | D  | E  | F      |
| UHC-22 | 8                 | 1808                    | 1250          | 3'-4"              | 4'-8" | 6'-1" | 11 | 58 | 1'-10" |
| UHC-32 | 12                | 2712                    | 1730          | 5'-0"              | 4'-8" | 6'-1" | 16 | 68 | 2'-8"  |
| UHC-42 | 16                | 3616                    | 2190          | 6'-8"              | 4'-8" | 6'-1" | 21 | 78 | 3'-6"  |
| UHC-33 | 18                | 4068                    | 2350          | 5'-0"              | 6'-4" | 7'-9" | 16 | 68 | 2'-8"  |
| UHC-52 | 20                | 4520                    | 2670          | 8'-4"              | 4'-8" | 6'-1" | 26 | 88 | 4'-4"  |
| UHC-43 | 24                | 5424                    | 2960          | 6'-8"              | 6'-4" | 7'-9" | 21 | 78 | 3'-6"  |
| UHC-53 | 30                | 6780                    | 3620          | 8'-4"              | 6'-4" | 7'-9" | 26 | 88 | 4'-4"  |
| UHC-44 | 32                | 7232                    | 3770          | 6'-8"              | 8'-0" | 9'-5" | 21 | 78 | 3'-6"  |
| UHC-54 | 40                | 9040                    | 4600          | 8'-4"              | 8'-0" | 9'-5" | 26 | 88 | 4'-4"  |
| UHC-64 | 48                | 10848                   | 5370          | 10'-0"             | 8'-0" | 9'-5" | 31 | 98 | 5'-2"  |

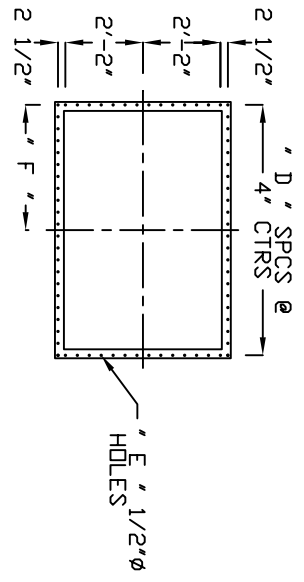
\* FILTER AREAS BASED ON CELLULOSIC FILTER MEDIA

**OPTIONS AND ORIENTATIONS**

|                 |                  |           |
|-----------------|------------------|-----------|
| INLET           | PLATEFORM/LADDER | VIBRATOR  |
| OUTLET          | FANS OR BLOWERS  | INDICATOR |
| EXPLOSION VENTS | SPECIAL PAINT    | POKE HOLE |

**NOTES:**

- 1) DESIGN PRESSURE UP TO +/- 20" W.G.
- 2) SHOP PAINT, EXTERIOR SURFACES ONE COAT OF DIRECT-TO-METAL ENAMEL, SERIES 55, COLOR (SWB55W101SHG) ULTRA GRAY @ 1-1 1/2 MILS D.F.T.,
- 3) AIR HEADER IS ALWAYS LOCATED AT 0 DEGREES.
- 4) A NEMA 4 SOLENOID BOX IS SUPPLIED. THE SOLENOID PORT IS PRE-CONNECTED TO ITS RESPECTIVE DIAPHRAGM VALVE RELIEF PORT USING POLY-FLOW TUBING.
- 5) A TIMER & NEMA 4 TIMER BOX IS SUPPLIED AND SHIPPED LOOSE FOR FIELD LOCATING AND MFG. THE TIMER BOX REQUIRES 1 PH / 60 / 115 VOLT ELECTRICAL CONNECTION.



|  |                |             |
|--|----------------|-------------|
| REV.   | DESCRIPTION    | DATE BY     |
|  |                |             |
|  |                |             |
| <b>ULTRA INDUSTRIES, INC.</b><br>1908 DE KOVEN AVE.<br>RACINE, WI 53403<br>PHONE: 414-633-5070 FAX: 414-633-5172 |                |             |
| UNPAID   | SERIAL         | APPROVED BY |
| 4/1/97   | ARRANGEMENT II | MLD         |
| CUSTOMER   |                |             |
| <b>GENERAL DIMENSIONS</b>  |                |             |
| MODEL  | DRAWING NUMBER | REV.        |
| UHC-22-64 II   | UHC-22-64 II   | 0           |
| CARTRIDGE COLLECTOR  |                |             |