

CUSTOMER DATA

AIR VOLUME
 FILTER AREA
 AIR/CLOTH RATIO
 PRODUCT
 TEMPERATURE
 DUST LOADING

CONSTRUCTION

MS (STANDARD)
 SS (DUST CONTACT)
 SS (GAS CONTACT)
 OTHER

FILTER BAGS

STANDARD 16 OZ. PE
 OTHER

DISCHARGE PLANGE

STANDARD 8" Ø
 OTHER

OPTIONS & ORIENTATIONS

- INLET
- INLET BAFFLE
- TARGET PLATE
- OUTLET
- BIRDSCREEN
- CAP. ACCESS
- D.A.P. ACCESS
- HOPPER PORT
- SUPPORT SADDLE
- SUPPORT STRUCT.
- PLATFORM
- LADDER
- FAN
- SLIDE GATE
- DRUM COVER KIT
- VIBRATOR
- ROTARY VALVE
- LEVEL INDICATOR
- POKE HOLE
- INTERIOR PAINT
- SUPPORT GRID
- EXPLOSION DOOR
- SCREW CONVEYOR
- INSULATION
- SPRINKLER
- SOLENOID BOX
- PULSE ON DEMAND
- PRESSURE SWITCH
- OTHER

NO. OF BAGS	BAG LIGH (LN)	FILTER AREA (SQ. FT.)	NO. OF VALVES	100 PSI COMP. AIR (SCFM)	EST. WEIGHT (LBS.)	INLET/OUTLET SIZE (IN)	GENERAL DIMENSIONS			
							A	B	C	D
BB 4	36	17	2	2.0	302	2" Ø	1'-4"	3'-10"	0'-7"	5'-9"
	58	29		2.2	373	THRU	1'-4"	5'-8"	0'-7"	7'-7"
BB 9	84	43	3	2.7	480	3" Ø	1'-4"	7'-10"	0'-7"	9'-9"
	36	39		4.0	435	THRU	2'-0"	3'-10"	1'-2"	8'-4"
BB 16	58	65	4	4.5	529	4" Ø	2'-0"	5'-8"	1'-2"	8'-2"
	84	95		5.0	611	5" Ø	2'-0"	7'-10"	1'-2"	10'-4"
BB 25	58	115	5	5.9	736	5" Ø	2'-8"	5'-8"	1'-9"	8'-9"
	84	170		6.2	847	THRU	2'-8"	7'-10"	1'-9"	10'-11"
BB 36	100	203	6	6.4	949	7" Ø	2'-8"	9'-2"	1'-9"	12'-3"
	58	180		6.8	974	THRU	3'-4"	5'-8"	2'-4"	9'-4"
BB 4	84	265	7	7.5	1112	THRU	3'-4"	7'-10"	2'-4"	11'-6"
	100	317		7.8	1384	11" Ø	3'-4"	9'-2"	2'-4"	12'-10"
BB 5	58	259	8	8.2	1378	9" Ø	4'-0"	5'-8"	2'-11"	9'-11"
	84	382		8.4	1580	THRU	4'-0"	7'-10"	2'-11"	12'-1"
BB 6	100	457	8	8.8	1736	12" Ø	4'-0"	9'-2"	2'-11"	13'-5"

SHOP NOTES

- 1) DESIGN PRESSURE UP TO +/- 20" V.G.
- 2) SURFACE FINISH: ALL EXTERIOR MS SURFACES FINISH: DNE (D) CHAT SHERVAIN WILLIAMS METALASTIC DTM ACRYLIC MODIFIED ENAMEL (SWS2600SHD) ULTRA GRAY @ 4 MILS D.F.T. MIN.
- 3) AIR HEADER IS ALWAYS LOCATED AT 0 DEGREES.
- 4) CLEAN AIR OUTLET CANNOT BE AT 0 DEGREES.
- 5) A NEMA 4 SOLENOID/TIMER BOX ASSEMBLY IS BEING SUPPLIED. THE SOLENOID VALVES ARE PREWIRED TO THEIR RESPECTIVE TIMER OUTPUT TERMINALS. THE SOLENOID PART (A) IS PRECONNECTED TO ITS RESPECTIVE DIAPHRAGM VALVE RELIEF PORT USING "POLYFLD" TUBING.
- 6) ALL UNITS WITH 58" & 84" FILTER BAGS WILL HAVE 20" X 36" HINGED ACCESS DOORS. ALL UNITS WITH 100" FILTER BAGS WILL HAVE 20" X 44" HINGED ACCESS DOORS. MODEL BB-9-36 WILL HAVE A 20" X 54" HINGED ACCESS DOOR. MODEL BB-4-36 WILL HAVE A 20" X 54" HINGED ACCESS DOOR. MODEL BB-4-58 AND BB-4-84 WILL HAVE A 16" X 36" BUILT UP ACCESS DOOR.
- 7) BB-36 & BB-25-100 D.A.P.'S WILL HAVE VERTICAL STIFFENERS.
- 8) NO HORIZONTAL STIFFENERS WILL BE USED ON THE HOPPERS.
- 9) UNITS WITH LEGS WILL HAVE SADDLES.
- 10) GENERAL ARRANGEMENT IS TO BE USED FOR REFERENCE ONLY AND NOT FOR CONSTRUCTION UNLESS CERTIFIED BY CUSTOMER.

REV.	DESCRIPTION	DATE BY

UNITS _____ TOLERANCES FRACTIONAL ± 1/8" ANGULAR ± .5°
 UNLESS OTHERWISE SPECIFIED, ALL DIMENSIONS ARE IN INCHES.

THIS MATERIAL IS THE SOLE PROPERTY OF ULTRA INDUSTRIES INC. AND SHALL NOT BE REPRODUCED, PUBLISHED OR DISCLOSED TO ANYONE WITHOUT OBTAINING THE WRITTEN AUTHORIZATION OF ULTRA INDUSTRIES INC.

NO BACKCHARGES FOR FIELD RELATED WORK OF ANY KIND WILL BE ACCEPTED UNLESS FIRST REQUESTED AND AGREED TO WITH WRITTEN AUTHORIZATION FROM ULTRA INDUSTRIES INC.



ULTRA INDUSTRIES, INC.
 1908 DEKOVEN AVE. RAJINE, WISCONSIN 53403
 PHONE: 262/653-5070 FAX: 262/653-5102

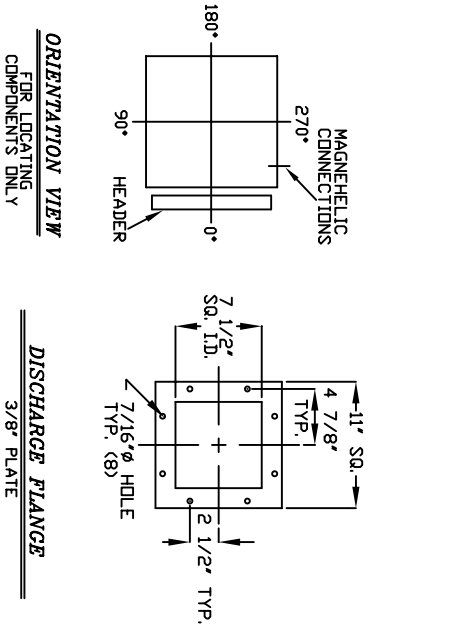
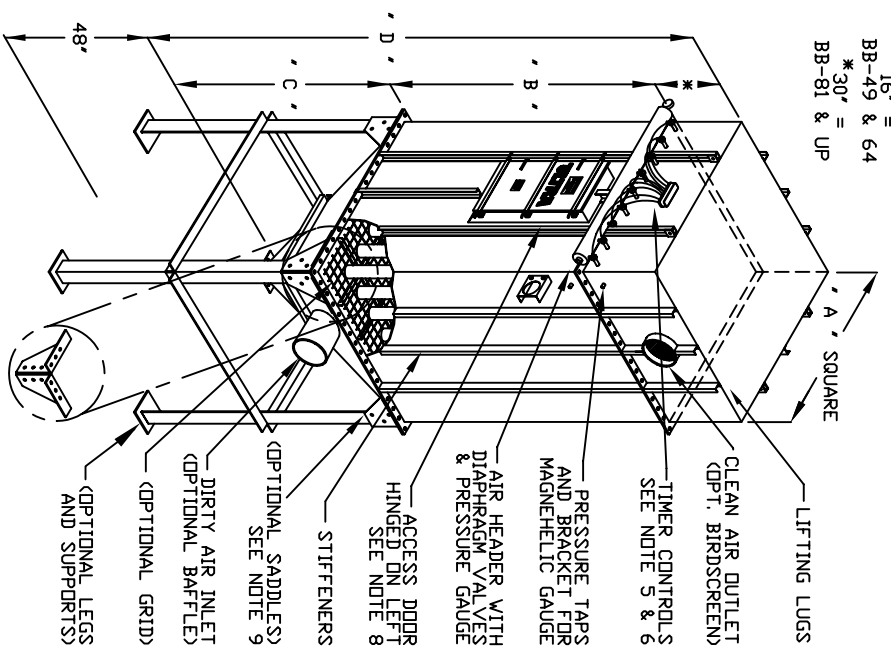
FOR SPARE PARTS, CALL: 1-800-35ULTRA

SCALE: N.T.S.	SERIAL NO.:	DRAWN BY: MLD
DATE: 2-00	ARRANGEMENT III	APPROVED BY:

GENERAL ARRANGEMENT

MODEL: BB-4 -- BB-36 COLLECTORS	DRAWING NUMBER: BB4-36 III	REV.: 0
BOTTOM BAG REMOVAL		

*16' = BB-49 & 64
 *30' = BB-81 & UP



ORIENTATION VIEW
 FOR LOCATING COMPONENTS ONLY

DISCHARGE FLANGE
 3/8" PLATE

CUSTOMER DATA

AIR VOLU. LIME
 FILTER AREA
 AIR/CLOTH RATIO
 PRODUCT
 TEMPERATURE
 DUST LOADING

CONSTRUCTION

MS (STANDARD)
 SS (DUST CONTACT)
 SS (GAS CONTACT)
 OTHER

FILTER BAGS

STANDARD 16 OZ. PE
 OTHER

DISCHARGE FLANGE

STANDARD 8" Ø
 OTHER

OPTIONS & ORIENTATIONS

- INLET
- INLET BAFFLE
- TARGET PLATE
- DUTILET
- BIRDSCREEN
- CAP. ACCESS
- HOPPER PORT
- SUPPORT SADDLE
- SUPPORT STRUCT.
- PLATFORM
- LADDER
- FAN
- SLIDE GATE
- DRUM COVER KIT
- VIBRATOR
- ROTARY VALVE
- LEVEL INDICATOR
- POKE HOLE
- INTERIOR PAINT
- SUPPORT GRID
- EXPLOSION DOOR
- SCREW CONVEYOR
- INSULATION
- SPRINKLER
- SOLENOID BOX
- PULSE ON DEMAND
- PRESSURE SWITCH
- OTHER

NO. OF BAGS	BAG LGH (IN)	FILTER AREA (SQ. FT.)	NO. OF VALVES	100 PSI COMP. AIR (SCFM)	EST. WEIGHT (LBS)	INLET/OUTLET SIZE (IN)	GENERAL DIMENSIONS			
							A	B	C	D
BB 84	520		7	9.8	2140	10" Ø	4'-8"	7'-10"	3'-6"	12'-8"
BB 100	622		7	10.5	2297	THRU	4'-8"	9'-2"	3'-6"	14'-0"
BB 49	750		7	11.2	2494	13" Ø	4'-8"	10'-10"	3'-6"	15'-8"
BB 84	679		8	12.0	2510	11" Ø	5'-4"	7'-10"	4'-1"	13'-3"
BB 100	813		8	12.8	2684	THRU	5'-4"	9'-2"	4'-1"	14'-7"
BB 64	980		8	13.1	2901	15" Ø	5'-4"	10'-10"	4'-1"	16'-3"
BB 84	859		9	13.5	3076	13" Ø	6'-0"	7'-10"	4'-8"	15'-0"
BB 100	1028		9	14.0	3266	THRU	6'-0"	9'-2"	4'-8"	16'-4"
BB 81	1241		9	14.5	3504	17" Ø	6'-0"	10'-10"	4'-8"	18'-0"
BB 84	1060		10	15.0	3871	15" Ø	6'-8"	7'-10"	5'-3"	15'-7"
BB 100	1270		10	15.5	4099	THRU	6'-8"	9'-2"	5'-3"	16'-11"
BB 100	1532		10	16.0	4383	19" Ø	6'-8"	10'-10"	5'-3"	18'-7"
BB 84	1283		11	17.0	4372	17" Ø	7'-4"	7'-10"	5'-10"	16'-2"
BB 100	1536		11	17.5	4616	THRU	7'-4"	9'-2"	5'-10"	17'-6"
BB 121	1853		11	18.0	4921	20" Ø	7'-4"	10'-10"	5'-10"	19'-2"

SHOP NOTES

- 1) DESIGN PRESSURE UP TO +/- 20" V.G.
- 2) SURFACE FINISH: ALL EXTERIOR MS SURFACES FINISH: DNE (1) COAT SHERWIN WILLIAMS METALASTIC DTM ACRYLIC MODIFIED ENAMEL (SWB55Z00SHG) ULTRA GRAY @ 4 MILS D.F.T. MIN.
- 3) AIR HEADER IS ALWAYS LOCATED AT 0 DEGREES.
- 4) CLEAN AIR OUTLET CANNOT BE AT 0 DEGREES.
- 5) BB-49 - BB-100 UNITS WILL HAVE A NEMA 4 SOLENOID/TIMER BOX ASSEMBLY. BB-121 UNITS WILL HAVE A NEMA 4 SOLENOID BOX. THE SOLENOID VALVES ARE PREWIRED TO THEIR RESPECTIVE TIMER OUTPUT TERMINALS. THE SOLENOID PORT IS PRE-CONNECTED TO ITS RESPECTIVE DIAPHRAGM VALVE RELIEF PORT USING POLY-ETHYLENE TUBING.
- 6) A TIMER & NEMA 4 TIMER BOX IS SUPPLIED AND SHIPPED LOOSE FOR FIELD LOCATING AND MGT. THE TIMER BOX REQUIRES 1 PH / 60 HZ / 115 VOLT ELECTRICAL CONNECTION. (BB-121 UNITS ONLY).
- 6) ALL UNITS WILL HAVE A 20" X 44" HINGED ACCESS DOOR.
- 7) ALL UNITS WILL HAVE VERTICAL STIFFENERS ON 24" CENTERS.
- 8) ALL UNITS WILL HAVE ONE HORIZONTAL STIFFENER AROUND HOPPER.
- 9) UNITS WITH LEGS WILL HAVE BOLT-ON SUPPORT SADDLES.
- 10) GENERAL ARRANGEMENT IS TO BE USED FOR REFERENCE ONLY AND NOT FOR CONSTRUCTION UNLESS CERTIFIED BY CUSTOMER.

REV.	DESCRIPTION	DATE BY

UNITS
 UNLESS OTHERWISE SPECIFIED, ALL DIMENSIONS ARE IN INCHES.

TOLERANCES
 FRACTIONAL ± 1/8"
 ANGULAR ± .5°

THIS MATERIAL IS THE SOLE PROPERTY OF ULTRA INDUSTRIES INC. AND SHALL NOT BE REPRODUCED, PUBLISHED OR DISCLOSED TO ANYONE WITHOUT OBTAINING THE WRITTEN AUTHORIZATION OF ULTRA INDUSTRIES INC.

NO BACKCHARGES FOR FIELD RELATED WORK OF ANY KIND WILL BE ACCEPTED UNLESS FIRST REQUESTED AND AGREED TO WITH WRITTEN AUTHORIZATION FROM ULTRA INDUSTRIES INC.



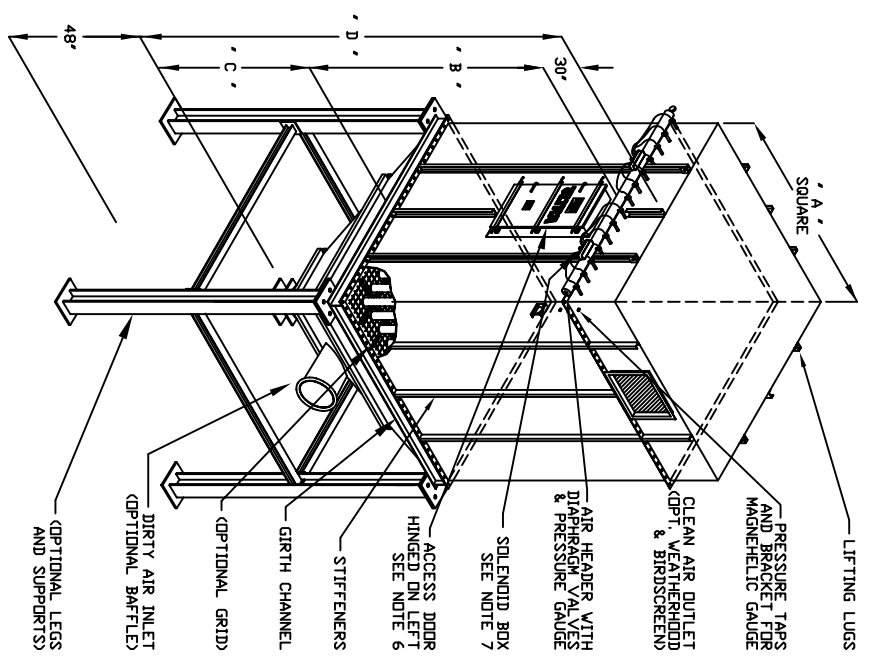
ULTRA INDUSTRIES, INC.
 1908 DEKOVEN AVE. RACINE, WISCONSIN 53403
 PHONE: 262/653-5070 FAX: 262/653-5102

FOR SPARE PARTS, CALL: 1-800-35ULTRA

SCALE: N.T.S. SERIAL NO.:
 DATE: 2-00 ARRANGEMENT III DRAWN BY: MLD APPROVED BY:

GENERAL ARRANGEMENT

MODEL: BB-49 --- BB-121 COLLECTORS DRAWING NUMBER: BB49-121 III REV.: 0
 BOTTOM BAG REMOVAL



ORIENTATION VIEW
FOR LOCATING COMPONENTS ONLY

DISCHARGE FLANGE
3/8" PLATE

CUSTOMER DATA

AIR VOLUME
FILTER AREA
AIR/CLOTH RATIO
PRODUCT
TEMPERATURE
DUST LEADING

CONSTRUCTION

MS (STANDARD)
SS (DUST CONTACT)
SS (GAS CONTACT)
OTHER

FILTER BAGS

STANDARD 16 OZ. PE
OTHER

DISCHARGE FLANGE

STANDARD 8" Ø
OTHER

OPTIONS & ORIENTATIONS

- INLET
- INLET BAFFLE
- TARGET PLATE
- OUTLET
- BIRDSCREEN
- CAP. ACCESS
- D.A.P. ACCESS
- HOPPER PORT
- SUPPORT SADDLE
- SUPPORT STRUCT.
- PLATFORM
- LADDER
- FAN
- SLIDE GATE
- DRUM COVER KIT
- VIBRATOR
- ROTARY VALVE
- LEVEL INDICATOR
- POKE HOLE
- INTERIOR PAINT
- SUPPORT GRID
- EXPLOSION DOOR
- SCREW CONVEYOR
- INSULATION
- SPRINKLER
- SOLENOID BOX
- PULSE ON DEMAND
- PRESSURE SWITCH
- OTHER

NO. OF BAGS	BAG LGH (IN)	FILTER AREA (SQ. FT.)	NO. OF VALVES	100 PSI COMP. AIR (SCFM)	EST. WEIGHT (LBS.)	INLET/OUTLET SIZE (IND)	GENERAL DIMENSIONS			
							A	B	C	D
BB 144	84	1527	12	18.0	4958	22" Ø	8'-0"	7'-10"	6'-5"	16'-9"
	100	1828	12	18.6	5219	THRU	8'-0"	9'-2"	6'-5"	18'-1"
BB 169	84	1792	13	19.2	5544	26" Ø	8'-0"	10'-10"	6'-5"	19'-9"
	100	2146	13	19.0	5934	18X24	8'-8"	7'-10"	6'-11"	17'-3"
BB 196	84	2078	14	19.6	6232	THRU	8'-8"	9'-2"	6'-11"	18'-7"
	100	2588	14	20.0	6605	24X26	8'-8"	10'-10"	6'-11"	20'-3"
BB 225	84	2386	15	21.6	6568	21X24	9'-4"	7'-10"	7'-6"	17'-10"
	100	2857	15	22.2	6882	THRU	9'-4"	9'-2"	7'-6"	19'-2"
BB 256	84	2714	16	22.8	7275	24X30	10'-0"	10'-10"	7'-6"	20'-10"
	100	3251	16	23.2	7508	24X24	10'-0"	7'-10"	8'-1"	18'-5"
BB 256	84	3251	16	24.0	7860	THRU	10'-0"	9'-2"	8'-1"	19'-9"
	100	3921	16	24.8	8300	24X25	10'-0"	10'-10"	8'-1"	21'-5"
BB 256	84	3921	16	25.0	8221	24X27	10'-8"	7'-10"	8'-8"	19'-0"
	100	3921	16	26.1	8590	THRU	10'-8"	9'-2"	8'-8"	20'-4"
				27.0	9051	24X40	10'-8"	10'-10"	8'-8"	22'-0"

SHOP NOTES

- 1) DESIGN PRESSURE UP TO +/- 20" W.G.
- 2) SURFACE FINISH: ALL EXTERIOR MS SURFACES FINISH: ONE (1) COAT SHERWIN WILLIAMS METALASTIC DTM ACRYLIC MODIFIED ENAMEL (SWSB52600SHG) ULTRA GRADE @ 4 MILS D.F.T. MIN.
- 3) AIR HEADER IS ALWAYS LOCATED AT 0 DEGREES.
- 4) CLEAN AIR OUTLET CANNOT BE AT 0 DEGREES.
- 5) ALL UNITS WILL HAVE A NEMA 4 SOLENOID BOX. THE SOLENOID VALVES VALVES ARE PREPARED TO THEIR RESPECTIVE TIMER OUTPUT TERMINALS. THE SOLENOID PORTS ARE PRE-CONNECTED TO THEIR RESPECTIVE DIAPHRAGM VALVE RELIEF PORT USING POLY-FLOW TUBING.
- 6) A TIMER & NEMA 4 TIMER BOX IS SUPPLIED AND SHIPPED LOOSE FOR A FIELD LOCATING AND MTG. THE TIMER BOX REQUIRES 1 PH / 60 HZ / 115 VOLT ELECTRICAL CONNECTION.
- 7) ALL UNITS WILL HAVE A 20" X 44" HINGED ACCESS DOOR.
- 8) ALL UNITS WILL HAVE VERTICAL STIFFENERS ON 24" CENTERS.
- 9) UNITS WITH LEGS WILL HAVE BOLT-ON SUPPORT SADDLES. BB-256 UNITS WILL HAVE A GIRTH CHANNEL.
- 10) GENERAL ARRANGEMENT IS TO BE USED FOR REFERENCE ONLY AND NOT FOR CONSTRUCTION UNLESS CERTIFIED BY CUSTOMER.

REV.	DESCRIPTION	DATE BY

TOLERANCES
FRACTIONAL ± 1/8"
ANGULAR ± .5°
UNLESS OTHERWISE SPECIFIED, ALL DIMENSIONS ARE IN INCHES.

THIS MATERIAL IS THE SOLE PROPERTY OF ULTRA INDUSTRIES INC. AND SHALL NOT BE REPRODUCED, PUBLISHED OR DISCLOSED TO ANYONE WITHOUT OBTAINING THE WRITTEN AUTHORIZATION OF ULTRA INDUSTRIES INC.
NO BACKCHARGES FOR FIELD RELATED WORK OF ANY KIND WILL BE ACCEPTED UNLESS FIRST REQUESTED AND AGREED TO WITH WRITTEN AUTHORIZATION FROM ULTRA INDUSTRIES INC.



ULTRA INDUSTRIES, INC.
1908 DEKOVEN AVE. RACINE, WISCONSIN 53403
PHONE: 262/653-5070 FAX: 262/653-5102

FOR SPARE PARTS, CALL: 1-800-35ULTRA

SCALE: N.T.S.	SERIAL NO.: ARRANGEMENT III	DRAWN BY: MLD
DATE: 2-00		APPROVED BY:

GENERAL ARRANGEMENT

MODEL: BB-144 -- BB-256 COLLECTORS	DRAWING NUMBER: BB144256 III	REV.: 0
BOTTOM BAG REMOVAL		