

HOPPER DISCH. FLANGE

GIRTH CHANNEL DETAIL

ND. OF BAGS	BAG LENGTH (IN)	FILTER AREA (SQ. FT.)	ND. OF VALVES	AVE. SFTH. OF COMP. AIR 100 PSI	WEIGHT LBS.	GENERAL DIMENSIONS		
						A	B	C
ND 240	100	3142	16	32	7980	10'-8"	13	4'-8"
ND 270	144	4524	18	36	9780	12'-0"	17	6'-0"
	100	3534			8700			
	120	4241			9700			
	144	5089			10700			

OPTIONS AND ORIENTATIONS

OPTION	DESCRIPTION	ORIENTATION
INLET	* PLATFORM	* VIBRATOR
OUTLET	* LADDER	* ROTARY VALVE
ACCESS DOOR	* SCREW CONV.	* BINDICATOR
HOPPER ACCESS	* FAN	* POKE HOLE
		* INTERIOR PAINT

NOTES:

- 1) DESIGN PRESSURE UP TO +/- 20' W.G.
- 2) SHOP PAINT: EXTERIOR SURFACES ONE COAT OF DIRECT-TO-METAL ENAMEL, SERIES 55, COLOR (SW/B55W10ISHG) ULTRA GRAY @ 1-1 1/2 MILS D.F.T.
- 3) AIR HEADER IS ALWAYS LOCATED AT 0 DEGREES.
- 4) A NEMA 4 SOLENOID BOX IS SUPPLIED. THE SOLENOID PORT IS PRE-CONNECTED TO ITS RESPECTIVE DIAPHRAGM VALVE RELIEF PORT USING POLY-FLOW TUBING.
- 5) A TIMER & NEMA 4 TIMER BOX IS SUPPLIED AND SHIPPED LOOSE FOR FIELD LOCATING AND MTG. THE TIMER BOX REQUIRES 1 PH / 60 / 115 VOLT ELECTRICAL CONNECTION.
- 6) ALL UNITS WILL HAVE LIFT-OFF ACCESS DOORS FOR BAG CHANGING.

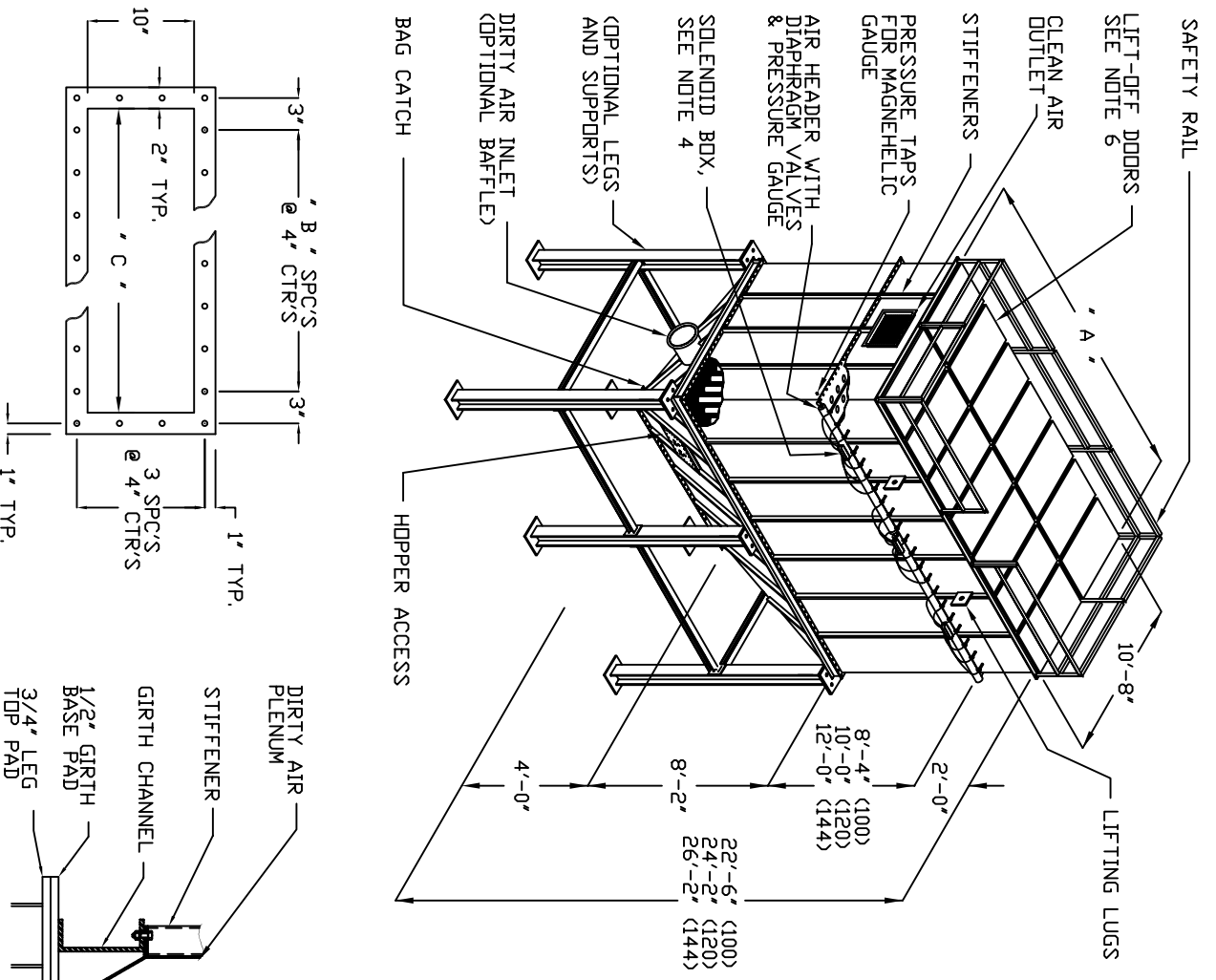
REV.	DESCRIPTION	DATE
A	CORRECTED DIMENSIONS	02-12-01

ULTRA INDUSTRIES, INC.
 1908 DE KOVEN AVE. RACINE, WI 53403
 PHONE: 414-633-5070 FAX: 414-633-5172

UPDATED: 4/30/97 SERIAL: ARRANGEMENT III DRAWN BY: MLD APPROVED BY:

GENERAL DIMENSIONS

MODEL	DRAWING NUMBER	REV.
ND-240-120-III	ND-240-120-III	A
TOP BAG REMOVAL		



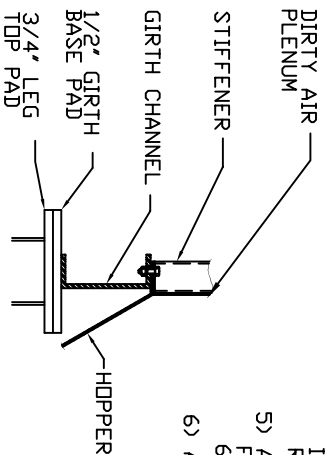
NO. OF BAGS	BAG LENGTH (IN)	FILTER AREA (SQ. FT.)	NO. OF VALVES	AVG. SCFM OF AIR 100 PSI	WEIGHT LBS.	GENERAL DIMENSIONS		
						A	B	C
ND 300	100	3927	20	40	11400	13'-4"	21	7'-4"
ND 330	120	4712	22	44	12400	14'-8"	25	8'-8"
ND 360	144	5655	24	48	13500	16'-0"	29	10'-0"
ND 390	100	4320	26	52	12200	17'-4"	33	11'-4"
ND 420	120	5184	28	56	13200	18'-8"	37	12'-8"

OPTIONS AND ORIENTATIONS

INLET	PLATEFORM	VIBRATOR
OUTLET	LADDER	ROTARY VALVE
ACCESS DOOR	SCREW CONV.	BINDICATOR
HOPPER ACCESS	FAN	POKE HOLE
LEGS		INTERIOR PAINT

NOTES:

- 1) DESIGN PRESSURE UP TO +/- 20' W.G.
- 2) SHOP PAINT: EXTERIOR SURFACES ONE COAT OF DIRECT-TO-METAL ENAMEL, SERIES 55, COLOR (S'WBSSW101SHG) ULTRA GRAY @ 1-1/2 MILS D.F.T.,
- 3) AIR HEADER IS ALWAYS LOCATED AT 0 DEGREES.
- 4) A NEMA 4 SOLENOID BOX IS SUPPLIED. THE SOLENOID PORT IS PRE-CONNECTED TO ITS RESPECTIVE DIAPHRAGM VALVE RELIEF PORT USING POLY-FLOW TUBING.
- 5) A TIMER & NEMA 4 TIMER BOX IS SUPPLIED AND SHIPPED LOOSE FOR FIELD LOCATING AND MTG. THE TIMER BOX REQUIRES 1 PH / 60 / 115 VOLT ELECTRICAL CONNECTION.
- 6) ALL UNITS WILL HAVE LIFT-OFF ACCESS DOORS FOR BAG CHANGING.



HOPPER DISCH. FLANGE

GIRTH CHANNEL DETAIL

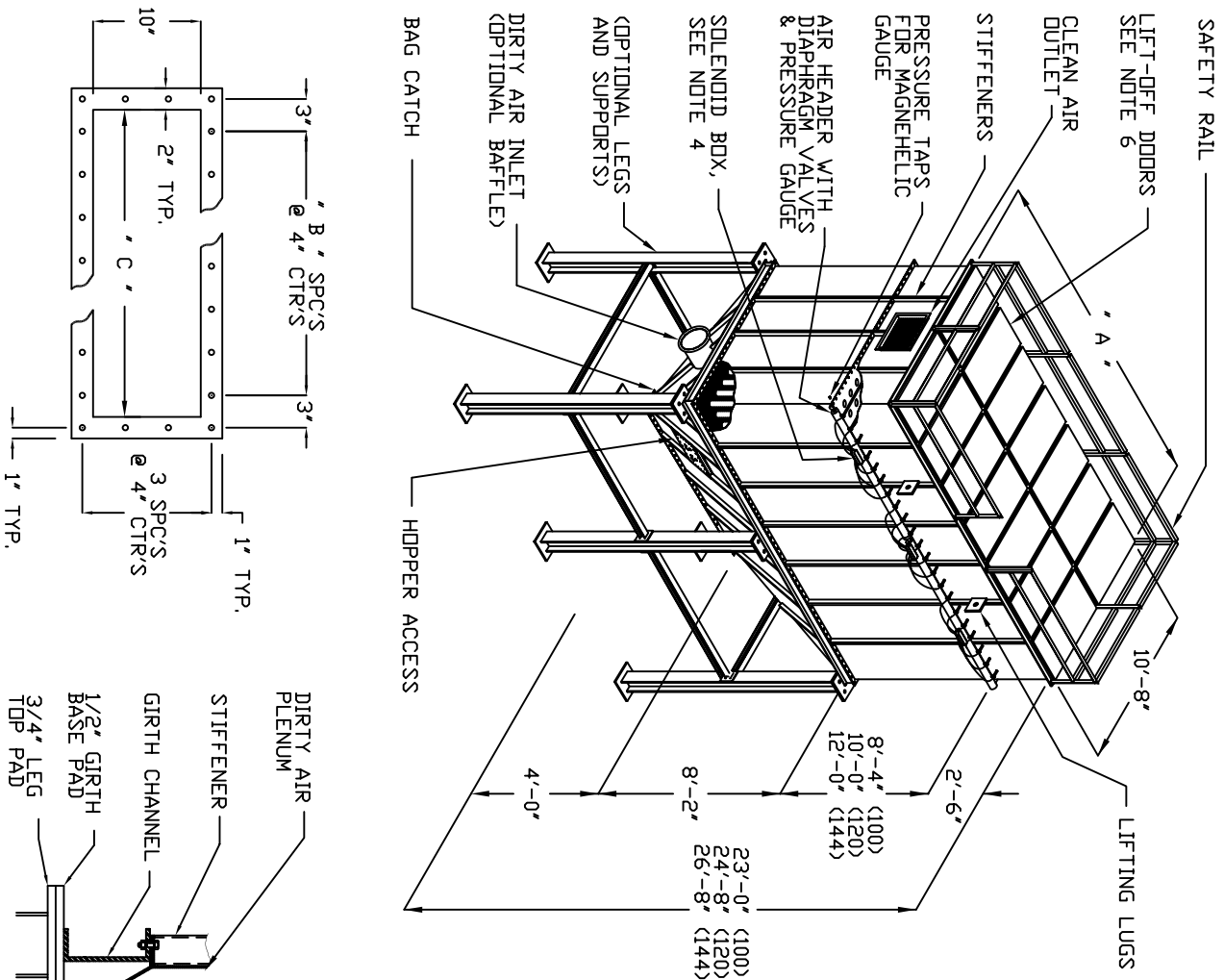
REV.	DESCRIPTION	DATE	BY
A	CORRECTED DIMENSIONS	02-12-01	DTH

ULTRA
 ULTRA INDUSTRIES, INC.
 1908 DE KOVEN AVE. RACINE, WI 53405
 PHONE: 414-633-5070 FAX: 414-633-5172

UPDATED: 4/30/97 SERIAL: ARRANGEMENT III DRAWN BY: MLD

GENERAL DIMENSIONS

MODEL	DRAWING NUMBER	REV.
ND-240-120-III	ND-240-120-III	A
TOP BAG REMOVAL		



HOPPER DISCH. PLANGE

GIRTH CHANNEL DETAIL

NO. OF BAGS	BAG LENGTH (IN)	FILTER AREA (SQ. FT.)	NO. OF VALVES	AVE. DE. CONP. AIR 100 PSI	WEIGHT LBS.	GENERAL DIMENSIONS			
						A	B	C	
ND 450	100	5890	30	60	15450	20'-0"	41	14'-0"	
ND 480	144	8482	32	64	16650	20'-0"	41	14'-0"	
ND 510	100	6283	32	64	17950	21'-4"	45	15'-4"	
ND 540	144	9048	34	68	16300	17600	21'-4"	45	15'-4"
ND 570	100	6676	34	68	19000	17100	22'-8"	49	16'-8"
ND 570	120	8011	36	72	18500	20950	22'-8"	49	16'-8"
ND 570	144	9613	38	76	20000	20950	24'-0"	53	18'-0"
ND 570	100	7069	36	72	17950	19400	24'-0"	53	18'-0"
ND 570	120	8482	36	72	20950	20950	25'-4"	57	19'-4"
ND 570	144	10179	38	76	18800	20300	25'-4"	57	19'-4"
ND 570	100	7461	38	76	20300	21900	25'-4"	57	19'-4"
ND 570	144	10744	38	76	18800	21900	25'-4"	57	19'-4"

OPTIONS AND ORIENTATIONS

INLET	OUTLET	ACCESS DOOR	HOPPER ACCESS	LEGS	PLATFORM	LADDER	SCREW CONV.	FAN	VIBRATOR	ROTARY VALVE	BINDICATOR	POKE HOLE	INTERIOR PAINT
*	*	*	*	*	*	*	*	*	*	*	*	*	*

NOTES:

- 1) DESIGN PRESSURE UP TO +/- 20' W.G.
- 2) SHOP PAINT: EXTERIOR SURFACES ONE COAT OF DIRECT-TO-METAL ENAMEL, SERIES 55, COLOR (SWB55W101SHG) ULTRA GRAY @ 1-1 1/2 MILS. D.F.T.,
- 3) AIR HEADER IS ALWAYS LOCATED AT 0 DEGREES.
- 4) A NEMA 4 SOLENOID BOX IS SUPPLIED. THE SOLENOID PORT IS PRE-CONNECTED TO ITS RESPECTIVE DIAPHRAGM VALVE RELIEF PORT USING POLY-FLOW TUBING.
- 5) A TIMER & NEMA 4 TIMER BOX IS SUPPLIED AND SHIPPED LOOSE FOR FIELD LOCATING AND MTG. THE TIMER BOX REQUIRES 1 PH / 60 / 115 VOLT ELECTRICAL CONNECTION.
- 6) ALL UNITS WILL HAVE LIFT-OFF ACCESS DOORS FOR BAG CHANGING.

REV.	DESCRIPTION	DATE
A	CORRECTED DIMENSIONS	02-12-01 DFH

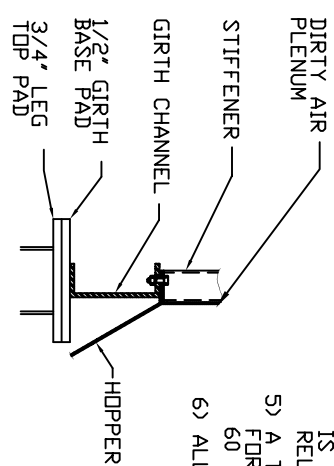
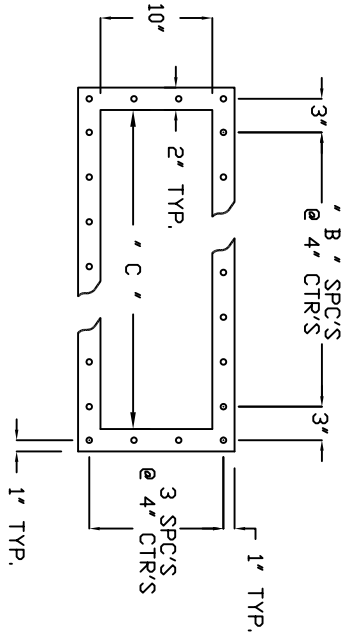
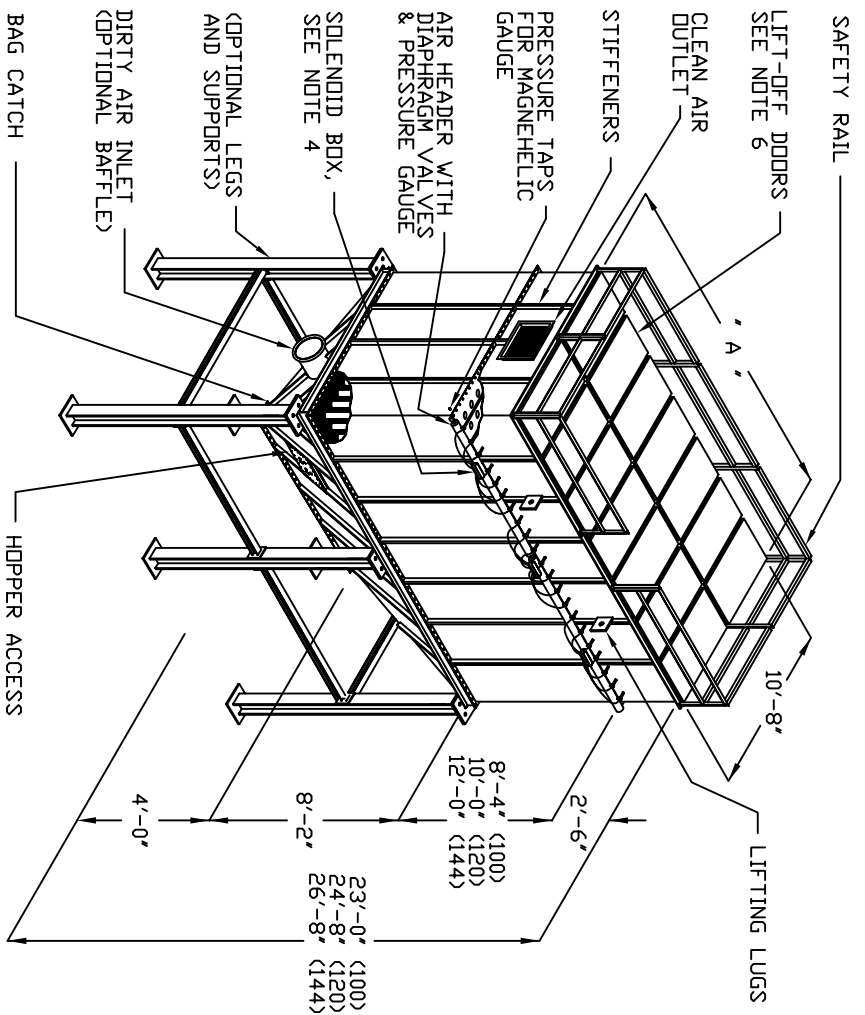
UPDATED: 4/30/97
 SERIAL: ARRANGEMENT III
 DRAWN BY: MLD



ULTRA INDUSTRIES, INC.
 1908 DE KOVEN AVE.
 RACINE, WI 53403
 PHONE: 414-633-5070 FAX: 414-633-5172

MODEL	DRAWING NUMBER	REV.
ND 450 - 570 III	ND-450-570 III	A

GENERAL DIMENSIONS



HOOPER DISCH. FLANGE

GIRTH CHANNEL DETAIL

ND. OF BAGS	BAG LENGTH (IND)	FILTER AREA (SQ. FT.)	ND. OF VALVES	AVG. SOFM. AIR 100 PSI	WEIGHT LBS.	GENERAL DIMENSIONS		
						A	B	C
ND 600	100	7854	40	80	19700	26'-8"	61	20'-8"
ND 630	120	9425	44	88	21200	26'-8"	61	20'-8"
ND 660	144	11310	48	96	22800	28'-0"	65	22'-0"
ND 690	100	8247	42	84	20500	28'-0"	65	22'-0"
ND 720	120	9896	46	92	22100	29'-4"	69	23'-4"
ND 720	144	11875	48	96	23800	29'-4"	69	23'-4"
ND 720	100	8639	44	88	21300	30'-8"	73	24'-8"
ND 720	120	10367	46	92	22800	30'-8"	73	24'-8"
ND 720	144	12441	48	96	24400	32'-0"	77	26'-0"
ND 720	100	9032	42	84	22100	32'-0"	77	26'-0"
ND 720	120	10838	46	92	23800	32'-0"	77	26'-0"
ND 720	144	13006	48	96	25500	32'-0"	77	26'-0"
ND 720	100	9425	42	84	22900	32'-0"	77	26'-0"
ND 720	120	11310	46	92	24600	32'-0"	77	26'-0"
ND 720	144	13572	48	96	26100	32'-0"	77	26'-0"

OPTIONS AND ORIENTATIONS

INLET	*	PLATFORM	*	VIBRATOR	*
DUTLET	*	LADDER	*	ROTARY VALVE	*
ACCESS DOOR	*	SCREW CONN.	*	BINDICATOR	*
HOOPER ACCESS	*	FAN	*	POKE HOLE	*
LEGS	*		*	INTERIOR PAINT	*

NOTES:

- 1) DESIGN PRESSURE UP TO +/- 20" W.G.
- 2) SHDP PAINT: EXTERIOR SURFACES ONE COAT OF DIRECT-TO-METAL ENAMEL, SERIES 55, COLOR (SWB55W101SHG) ULTRA GRAY @ 1-1 1/2 MILS D.F.T.
- 3) AIR HEADER IS ALWAYS LOCATED AT 0 DEGREES.
- 4) A NEMA 4 SOLENOID BOX IS SUPPLIED. THE SOLENOID PORT IS PRE-CONNECTED TO ITS RESPECTIVE DIAPHRAGM VALVE RELIEF PORT USING POLY-FLOW TUBING.
- 5) A TIMER & NEMA 4 TIMER BOX IS SUPPLIED AND SHIPPED LOOSE FOR FIELD LOCATING AND MTG. THE TIMER BOX REQUIRES 1 PH / 60 / 115 VOLT ELECTRICAL CONNECTION.
- 6) ALL UNITS WILL HAVE LIFT-OFF ACCESS DOORS FOR BAG CHANGING.

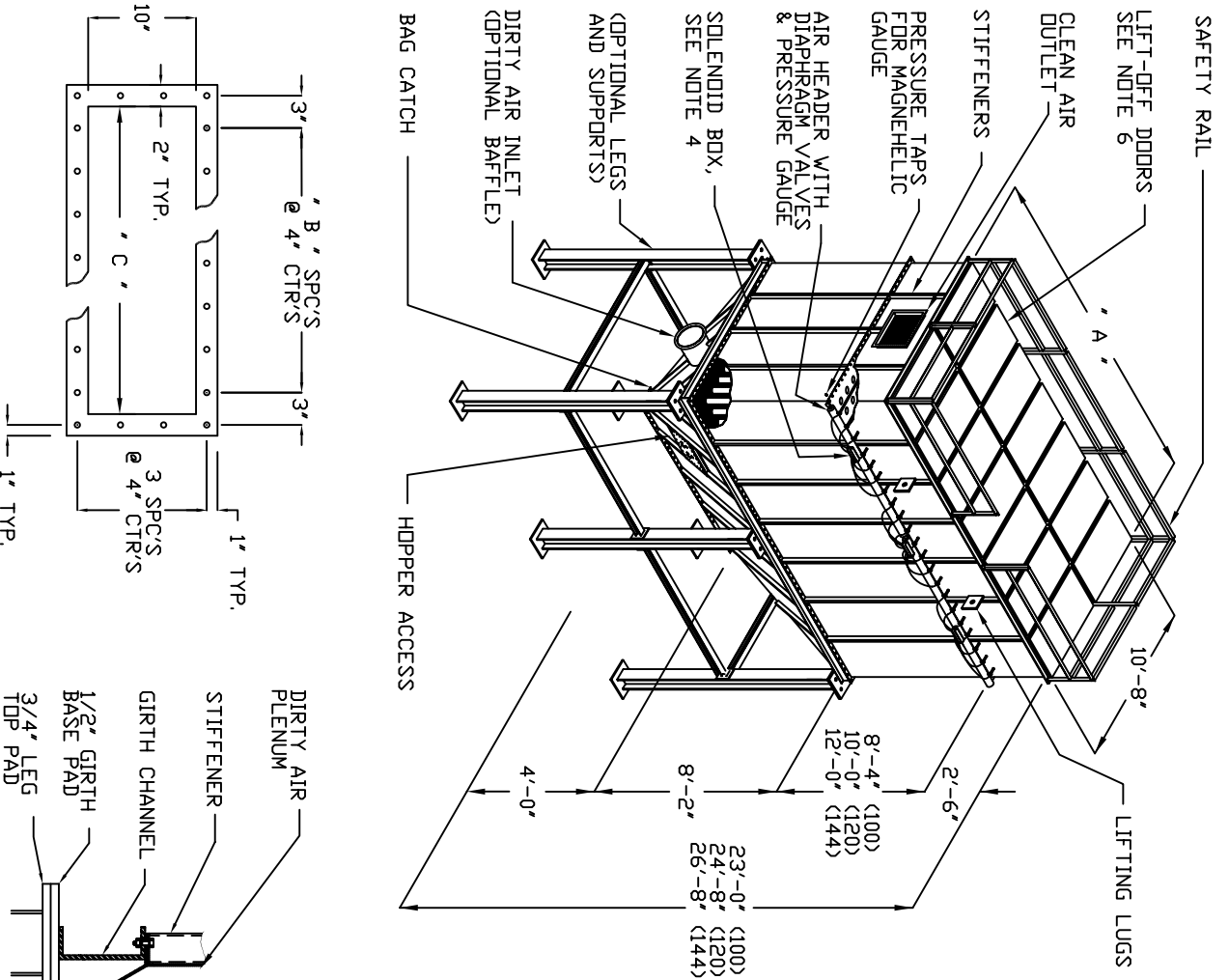
REV.	DESCRIPTION	DATE BY
A	CORRECTED DIMENSIONS	02-12-01 DFH

ULTRA
 ULTRA INDUSTRIES, INC.
 1908 DE KOVEN AVE. RACINE, WI 53403
 PHONE: 414-633-5070 FAX: 414-633-5172

UPDATED: 4/30/97
 SERIAL: ARRANGEMENT III
 DRAWN BY: MLD

GENERAL DIMENSIONS

MODEL	DRAWING NUMBER	REV.
ND 600 - 720 III	ND-600-720 III	A



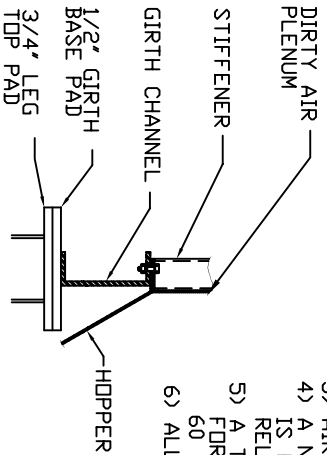
NO. OF BAGS	BAG LENGTH (IN)	FILTER AREA (SQ. FT.)	NO. OF VALVES	AVG. SCFM OF AIR @ 100 PSI	WEIGHT LBS.	GENERAL DIMENSIONS		
						A	B	C
ND 750	100	9817	50	100	23700	33'-4"	81	27'-4"
ND 780	100	10210	52	104	24500	34'-8"	85	28'-8"
ND 810	100	10603	54	108	26300	36'-0"	89	30'-0"
ND 840	100	10996	56	112	27200	37'-4"	93	31'-4"
ND 870	100	11388	58	116	29100	38'-8"	97	32'-8"
ND 900	100	11781	60	120	31100	40'-0"	101	34'-0"

OPTIONS AND ORIENTATIONS

INLET	*	PLATFORM	*	VIBRATOR	*
OUTLET	*	LADDER	*	ROTARY VALVE	*
ACCESS DOOR	*	SCREW CONV.	*	BINDICATOR	*
HOPPER ACCESS	*	FAN	*	PIKE HOLE	*
LEGS	*		*	INTERIOR PAINT	*

NOTES:

- 1) DESIGN PRESSURE UP TO +/- 20' W.G.
- 2) SHOP PAINT: EXTERIOR SURFACES ONE COAT OF DIRECT-TO-METAL ENAMEL, SERIES 55, COLOR (SWB55W10ISHG) ULTRA GRAY @ 1-1 1/2 MILS D.F.T., AIR HEADER IS ALWAYS LOCATED AT 0 DEGREES.
- 3) A NEMA 4 SOLENOID BOX IS SUPPLIED. THE SOLENOID PORT IS PRE-CONNECTED TO ITS RESPECTIVE DIAPHRAGM VALVE RELIEF PORT USING POLY-FLOW TUBING.
- 4) A TIMER & NEMA 4 TIMER BOX IS SUPPLIED AND SHIPPED LOOSE FOR FIELD LOCATING AND MTG. THE TIMER BOX REQUIRES 1 PH / 60 / 115 VOLT ELECTRICAL CONNECTION.
- 5) ALL UNITS WILL HAVE LIFT-OFF ACCESS DOORS FOR BAG CHANGING.



HOPPER DISCH. FLANGE

GIRTH CHANNEL DETAIL

REV. A	CORRECTED DIMENSIONS		02-12-01
REV.	DESCRIPTION	DATE	BY
ULTRA			
ULTRA INDUSTRIES, INC. 1908 DE KOVEN AVE. RACINE, WI 53403 PHONE: 414-633-5070 FAX: 414-633-5172			
UPDATED 4/30/97	SERIAL	APPROVED BY	
CUSTOMER	ARRANGEMENT III	DRAWN BY	MJD
GENERAL DIMENSIONS			
MODEL	ND 750 - 900 III	DRAWING NUMBER	ND-750-900 III
	TOP BAG REMOVAL		
REV.			A